



OPERATION MANUAL

CLASSIC LINE

SPÜLBOY® Neptun T2000

SPÜLBOY® Twin-Go T

SPÜLBOY® Twin-Go T portable

**UNIQUE!
100% HYGIENIC
CLEAN GLASSES**



Schäfer Produkte GmbH
Simonshöfchen 53
42327 Wuppertal/Germany
Phone: +49 (0) 202 695 32-0
E-Mail: info@spuelboy.de

www.spuelboy.de





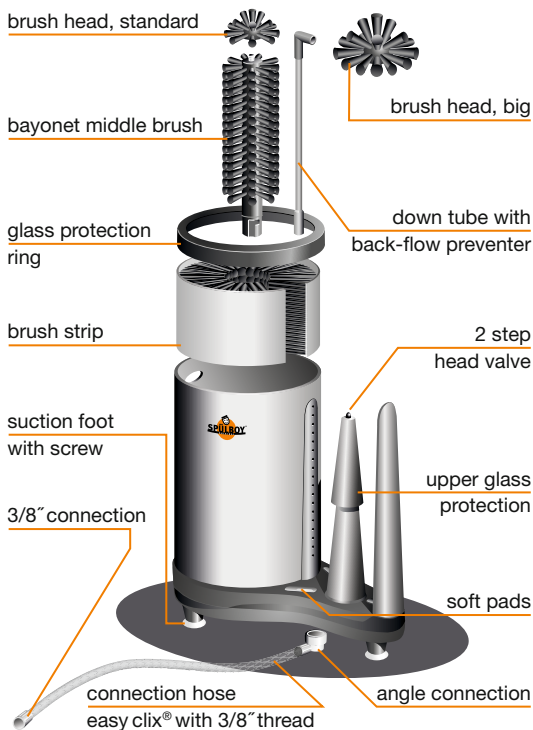
Your SPÜLBOY® glasswasher consists of the following parts:

- 1 x Unit with fixed pre-wash and rinsing canister or rinsing arms (depending on type of unit)
- 1 x Bayonet middle brush with head, standard
- 1 x Brush strip
- 1 x Glass protection ring (oder 2 pc. for Twin-Go T)
- 1 x Inlet pipe with one-way valve
- 1 x Double ring shower (Twin-Go T, Twin-Go T portable)
- 1 x Water connection hose incl. 3/8" thread

Optional:

- Drain hose for process water

This SPÜLBOY® glasswasher is used for the hygienic cleaning of serving receptacles in the catering sector, such as glasses, tankards and carafes.



Dimensions & Weight

W/H/D: 33 x 33 x 19cm
Canister Ø: 18cm
Internal glass height: 2.5cm
Weight: 1.8kg (net)



Spare parts & accessories

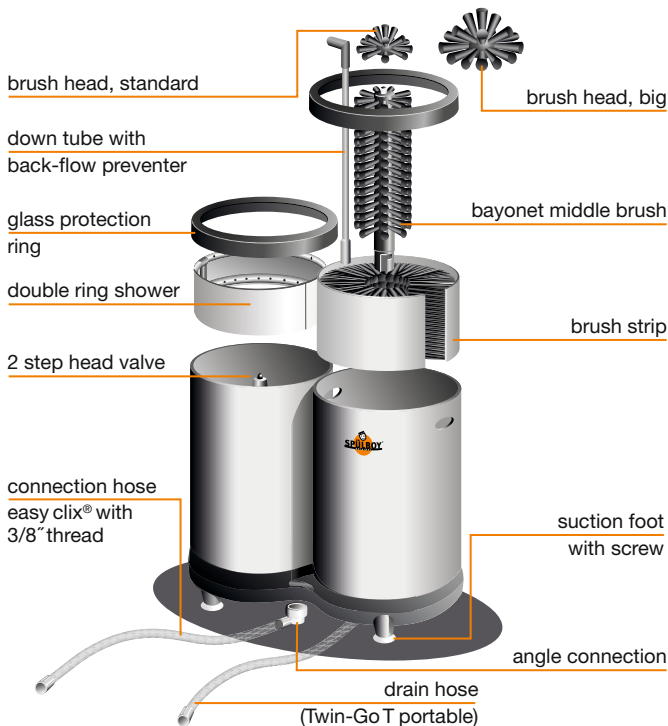
Art.- name	Art.- no.
Brush head, standard	3860
Brush head, big	3861
Bayonet middle brush with head	3751
Brush strip	3890
Down tube with back-flow preventer	3956
2 step head valve	6046
Glass protection ring for pre-washing canister	3930
Upper glass protection	6060
Connection hose easy-clix®, length 60cm, 3/8" thread	5072
Angle connection easy-clix®	6075
Suction feet with screw	5051
Soft pads	6073

100% HYGIENE!
SPÜLBOY® CLEANSER

Art.- name	Art.- no.
Glass washing tablets	2938
Sanitizer powder	2910
Cleaning set	2930
(Glass washing tablets, Sanitizer powder & Brush head, standard)	

Device components

Twin-Go T / Twin-Go T portable



Dimensions & Weight

W/H/D: 38 x 33 x 19cm
Canister Ø: 18cm
Internal glass height: 23.5cm
Weight: 2.5kg (net)

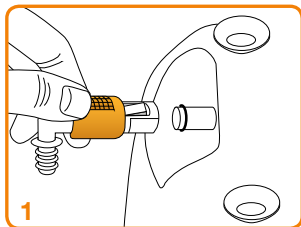


Spare parts & accessories Twin-Go T / Twin-Go T portable

Art.- name	Art.- no.
Brush head, standard	3860
Brush head, big	3861
Bayonet middle brush with head	3751
Brush strip	3890
Down tube with back-flow preventer	3952
2 step head valve	6046
Double ring shower	4181
Glass protection ring for pre-washing canister and rinsing pot	3935
Upper glass protection	6060
Connection hose easy-clix [®] , length 60cm, 3/8" thread	5072
Angle connection. easy-clix [®]	6075
Suction feet with screw	5051
Drain hose 60cm (Twin-Go T portable)	5083

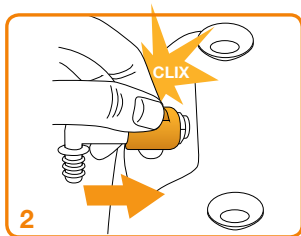
100% HYGIENE!
SPÜLBOY[®] CLEANSER

Art.- name	Art.- no.
Glass washing tablets	2938
Sanitizer powder	2910
Cleaning set	2930
(Glass washing tablets, Sanitizer powder & Brush head, standard)	

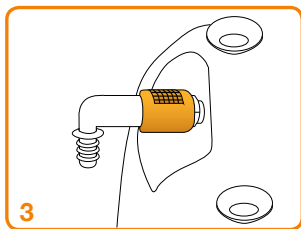


Attach the enclosed connection hose to the device.

Please make sure that the sealing ring is lodged in the designated groove on the unit side to avoid leaks.



Set the safety slide to **OFF**, attach the connector to the NU[®] connection nozzle and then engage the slide in the **ON** position, thus activating the lock.

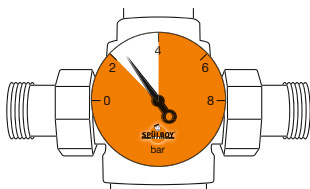
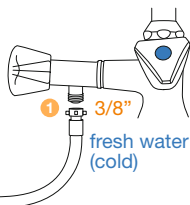


A "clix" signals a safe connection.

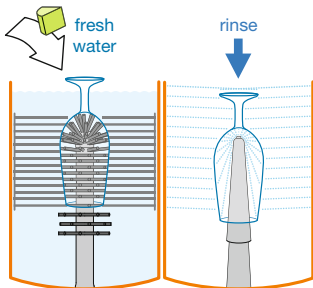
Connect the end of the water connection hose to the drinking water supply (cold water).



- 1** connect the device to the main water supply (3/8" or likewise)



- 2** regulate the water pressure between 2 to max. 4 bar

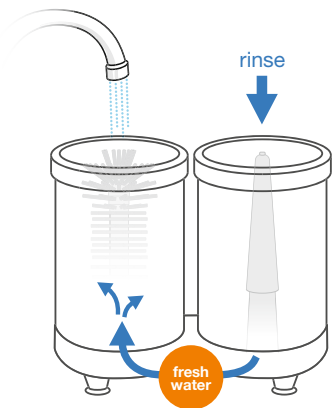


- 3** check the system
- fill in cold fresh water
 - fill in Classic SPÜLBOY® tab
 - check horizontal water flow



ready to use

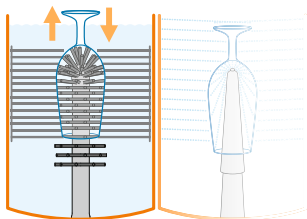




- 1 check and keep the cleanliness of the device and the work environment
- 2 fill the pre-sink with fresh water
- 3 place a quarter of a Classic SPÜLBOY® tablet into the pre-washing canister
- 4 renew the tab, if **during the rinsing (!) no more foam** forms (after appr. 4-6 hours)

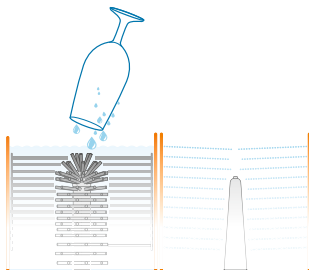


How to clean a glass?

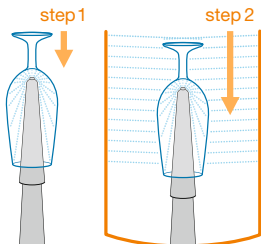


- 1 move the glass with steady up and down movements completely over the brush, at least **3-4 times**

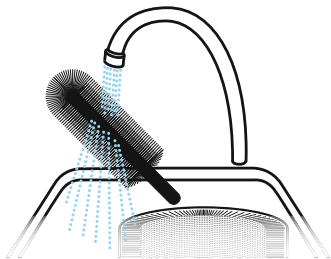
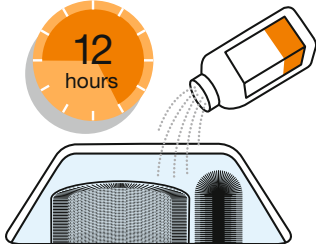
don't twist!



- 2 let the glass drain off briefly over the pre-washing canister



- 3 push down the 2 stage valve for at least **2-3 seconds**; rinse until the glass inside and outside is clearly cleaned



End of the day:

- 1 take off the brushes and place them with Classic brush sanitizer into a bucket/sink
- 2 fill up the sink with warm water and wait for appr. 12 hours
- 3 wipe off the device thoroughly with a clean sponge

In the morning:

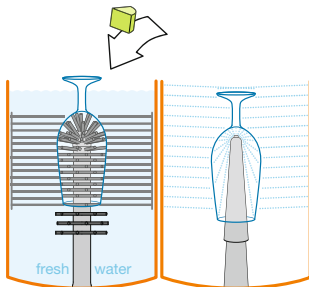
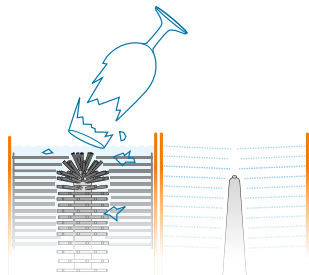
- 1 rinsing brushes clean
- 2 place the brushes back into the device
- 3 fill-up with fresh water and new tab



ready to use



In case of glass damage:



- 1 stop the rinsing process immediately
- 2 take the device off the water pressure
- 3 let the water drain out of the pre-washing canister
- 4 **take off the brushes carefully and rinse them clean**
- 5 **carefully remove all broken glass**
- 6 place the brushes back into the device
- 7 check the system





Safety instructions!



- Continuously check the visual cleanliness of the SPÜLBOY®.
- Check the connection hose and hose connections for damage or leaks.
- Clean the glasswasher at a maximum temperature of 60 °C in a dishwasher.
- The minimum pressure is 2 bar, the permissible maximum pressure is 6 bar (static).
- The glasswasher must only be operated in its original condition and with original spare parts.
- Stop the washing cycle immediately in case of broken glass and clean the unit thoroughly as described; proceed extremely cautiously and carefully remove all fragments of glass.
- Do not tip any food leftovers or other drink residues into the unit! This can lead to blockages of the water drain and therefore have a negative impact on the cleaning results.

Turn off the tap at the end of operation, disconnect the SPÜLBOY® from the water connection and clean the device and the brushes. (see section CLEANING THE DEVICE)



The original SPÜLBOY® warranty

Schäfer Produkte GmbH offers you a manufacturers warranty of 2 years from the date of purchase. We remediate all defects free of charge during this period, which are proven to be due to faulty material or workmanship and substantially impair its function. Other claims are excluded, e.g. wear down on brushes.

The warranty does not cover damage resulting from failure to follow the operating instructions, improper handling or normal wear and tear.

The warranty becomes void in case of any kind of intervention not authorised by Schäfer Produkte GmbH. If a repair should be necessary, please send the SPÜLBOY® without accessories, cleaned and well packed, with a description of the fault and proof of purchase, directly to Schäfer Produkte GmbH. The statutory warranty rights towards the seller and any possible seller warranties remain unaffected.

Loss of warranty for:

- Improper handling
- Improper cleaning
- Inappropriate use
- Destruction of the unit by force
- Opening of the glasswasher
- Use of caustic or chlorinated products



We are responsible

- certified according to DIN 6653-3 for manual glasswashers
- Company certification according to DIN EN ISO 9001:2015
- 100% hygiene without power consumption
- 100% cleanliness with the lowest fresh water consumption: Ø 6cl per glass cleaning
- Highest efficiency with minimal use of 100% biodegradable Glass washing tabs and brush cleaners
- SPÜLBOY® uses only high-quality and REACH-tested plastics.
- SPÜLBOY® glasswashers are fully recyclable. SPÜLBOY® ist a member of RESY Organisation für Wertstoffentsorgung GmbH.



Please dispose of disused devices in the plastic waste bin provided for this purpose and the paper packaging in the paper bin.